

LZ2345

Two-power supply (+5 V and +12 V) operation
1/3 type Color CCD Area Sensor for PAL

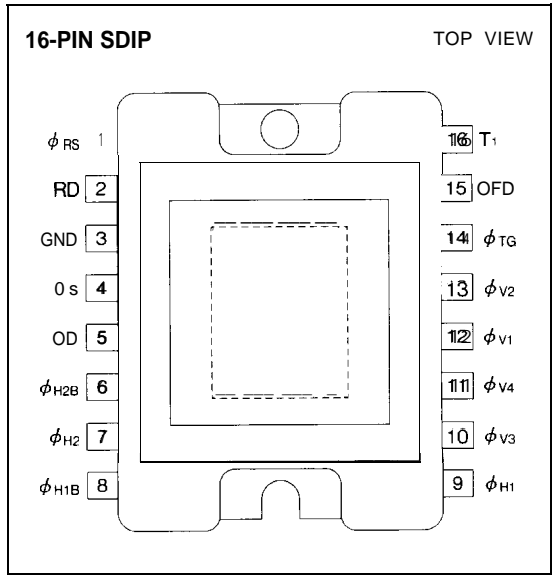
DESCRIPTION

LZ2345 is a 1/3-type (6,0 mm) solid-state image sensor that consists of PN photo-diodes and CCDs (charge-coupled devices) driven by only positive voltages. Having approximately 220000 pixels (horizontal 384 × vertical 582), the sensor provides a stable color image.

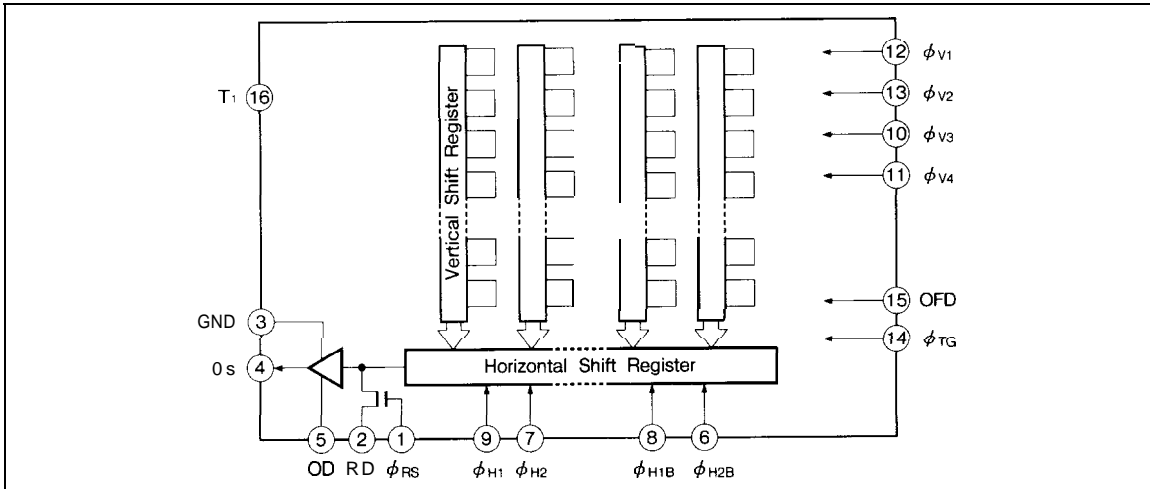
FEATURES

- Number of pixels : 362 (H) × 582 (V)
pixel pitch : 13.6 μm (H) × 6.3 μm (V)
Number of optical black pixels : Horizontal; front 2 and rear 20
- Complementary color filters of Mg, G, Cy and Ye
- Low fixed pattern noise and lag
- No sticking and no image distortion
- Blooming suppression structure
- Built-in output amplifier
- Variable electronic shutter (1/50 to 1/10 000 s)
- Compatible with PAL standard
- Package : 16-pin SDIP [CERDIP](WDIP016-N-0500B)

PIN CONNECTIONS



BLOCK DIAGRAM



2 CCD AREA SENSORS

PIN DESCRIPTION

SYMBOL	PIN NAME
RD	Reset transistor drain
OD	Output transistor drain
0 s	Video output
ϕ RS	Reset transistor gate clock
ϕ V1, ϕ V2, ϕ V3, ϕ V4	Vertical shift register gate clock
ϕ H1, ϕ H2, ϕ H1B, ϕ H2B	Horizontal shift register gate clock
ϕ TG	Transfer gate clock
OFD	Overflow drain
T ₁	Test terminal
GND	Ground

ABSOLUTE MAXIMUM RATINGS

(Ta=25°C)

PARAMETER	SYMBOL	RATING	UNIT
Output transistor drain voltage	V _{OD}	0 to +15	V
Reset transistor drain voltage	V _{RD}	0 to +15	V
Test terminal. T ₁	V _{T1}	0 to +15	V
Reset gate clock voltage	V _{ϕRS}	-0.3 to +15	V
Vertical shift register clock voltage	V _{ϕV}	-0.3 to +15	V
Horizontal shift register clock voltage	V _{ϕH}	-0.3 to +15	V
Transfer gate clock voltage	V _{ϕTG}	-0.3 to +15	V
Overflow drain voltage	V _{OFD}	0 to +27	V
Storage temperature	T _{sta}	-40 to +85	°C
Operating ambient temperature	T _{opr}	-20 to +70	°C

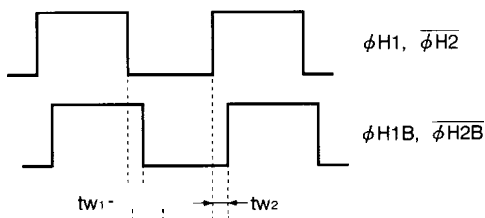
RECOMMENDED OPERATING CONDITIONS

PARAMETER		SYMBOL	MIN.	TYP.	MAX.	UNIT	NOTE
Operating ambient temperature		Topr		25.0		°C	
Output transistor drain voltage		V _{OD}	12.0	12.5	14.0	v	
Reset transistor drain voltage		V _{RD}		V _{OD}		v	
Overflow drain voltage	When DC is applied	V _{OFD}	3.0		12.0	v	1
	When pulse is applied p-p level	V _{φ OFD}	12.0	12.5	14.0	v	2
Test terminal, T ₁		V _{T1}		V _{OD}		v	
Ground voltage		GND		0.0		v	
Transfer gate clock	LOW level	V _{φ TGL}	-0.05	0.0	0.05	v	
	HIGH level	V _{φ TGH}	12.0	12.5	14.0	v	
Vertical shift register clock	LOW level	V _{φ V1-4L}	-0.05	0.0	0.05	v	
	HIGH level	V _{φ V1-4H}	4.7	5.0	6.0	v	
Horizontal shift register clock	LOW level	V _{φ H1-2L} , V _{φ H1B-2BL}	-0.05	0.0	0.05	v	
	HIGH level	V _{φ H1-2H} , V _{φ H1B-2BH}	4.7	5.0	6.0	v	
Reset gate clock	LOW level	V _{φ RSL}	0.0		VRD-10.5	v	
	HIGH level	V _{φ RSH}	V _{RD} - 6.0		9.5	v	
Vertical shift register clock frequency		f _{φ V1-4}		15.63		kHz	
Horizontal shift register clock frequency		f _{φ H1-2} , f _{φ H1B-2B}		6.75		MHz	
Reset gate clock frequency		f _{φ RS}		6.75		MHz	
Horizontal shift register clock phase		tw ₁ , tw ₂	0.0	5.0	10.0	ns	3

CCD AREA SENSORS

NOTES :

1. When DC voltage is applied, shutter speed is 1/50 seconds.
2. When pulse is applied, shutter speed is less than 1/50 seconds



ELECTRICAL CHARACTERISTICS (Drive method : Field Accumulation)

(Ta = 25°C, Operating conditions : typical values for the recommended operating conditions, Color temperature of light source : 3200 K / IR cut-off filter (CM-500, 1 mm))

ELECTRICAL CHARACTERISTICS

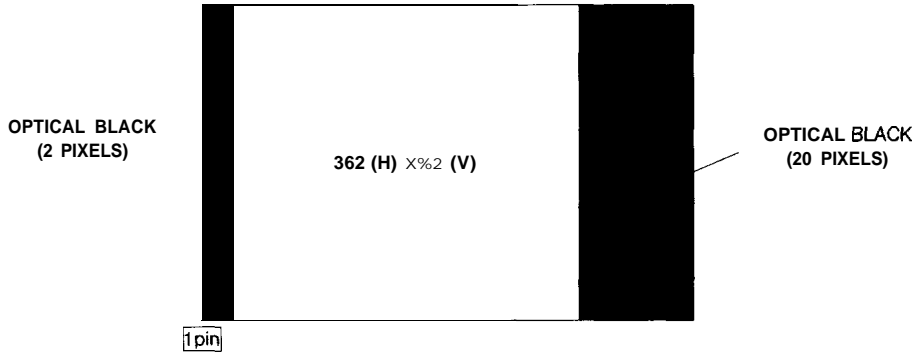
PARAMETER	SYMBOL	MIN.	TYP.	MAX.	UNIT	NOTE
Standard output voltage	V _o		150		mV	
Photo response non-uniformity	PRNU			15	%	2
Saturation signal	V _{sat}	450			mV	3
Dark output voltage	V _{dark}		5.0	15.0	mV	1.4
Dark signal non-uniformity	DSNU		1.5	5.0	mV	1.5
Sensitivity	R		400		mV	6
Smear ratio	SMR		-85	-76	dB	7
Image lag	AI			1.0	%	8
Blooming suppression ratio	ABL	1000				9
Output transistor drain current	I _{OD}		2.5	5.0	mA	
Output impedance	R _o		400		Ω	
Vector breakup				10.0	°, %	10
Line crawling				3.0	00	11
Luminance flicker				2.0	%	12

- The standard output voltage is defined as 150 mV by the average output voltage under uniform illumination.
- The standard exposure level is defined when the average output voltage is 150 mV under uniform illumination.

NOTES :

- 1 Ta : +60°C
- 2 The image area is divided into 10×10 segments. The segment's voltage is the average output voltage of all the pixels within the segment. PRNU is defined by (V_{max}-V_{min})/V_o, where V_{max} and V_{min} are the maximum and the minimum values of each segment's voltage respectively, when the average output voltage V_o is 150 mV.
- 3 The image area is divided into 10X 10 segments.
The saturation signal is defined as the minimum of each segment's voltage which is the average output voltage of all the pixels within the segment, when the exposure level is sat as 10 times, compared to standard level.
- 4 The average output voltage under a non-exposure condition.
- 5 The image area is divided into 10X 10 segments. OSNU is defined by (V_{dmax}-V_{dmin}) under the non-exposure condition where V_{dmax} and V_{dmin} are the maximum and the minimum values of each segment's voltage, respectively y, that is the average output voltage over all pixels in the segment,
6. The average output voltage when a 1000 lux light source attached with a 90% reflector is imaged by a lens of F4, f50 mm.
7. The sensor is adjusted to position a V/I O square at the center of image area where V is the vertical length of the image area. SMR is defined by the ratio of the output voltage detected during the vertical blanking period to the maximum of the pixel voltage in the V/I O square.
8. The sensor is exposed at the exposure level corresponding to the standard condition preceding non-exposure condition. AI is defined by the ratio between the output voltage measured at the 1st field during the non-exposure period and the standard output voltage.
9. The sensor is adjusted to position a V/I O square at the center of image area. ABL is the ratio between the exposure at the standard condition and the exposure at a point where a blooming is observed,
10. Observed with a vector scope when the color bar chart is imaged under the standard exposure condition,
11. The difference between the average output voltage of the (Mg+Ye),(G+Cy) line and the (Mg+Cy),(G+Ye) line under the standard exposure condition.
12. The difference between the average output voltage of the odd field and the even field.

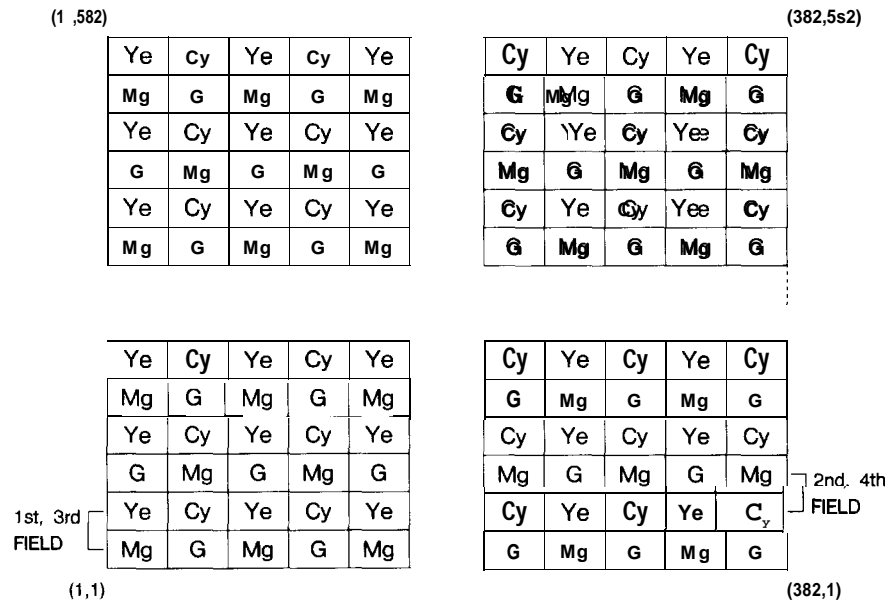
PIXEL STRUCTURE



CCD AREA SENSORS

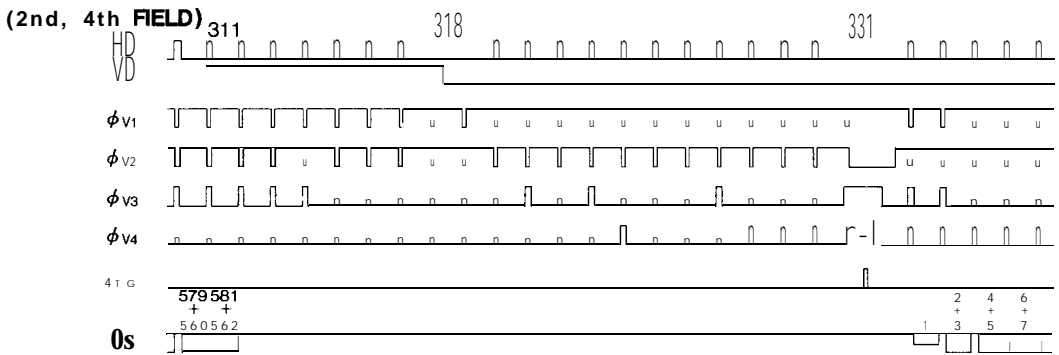
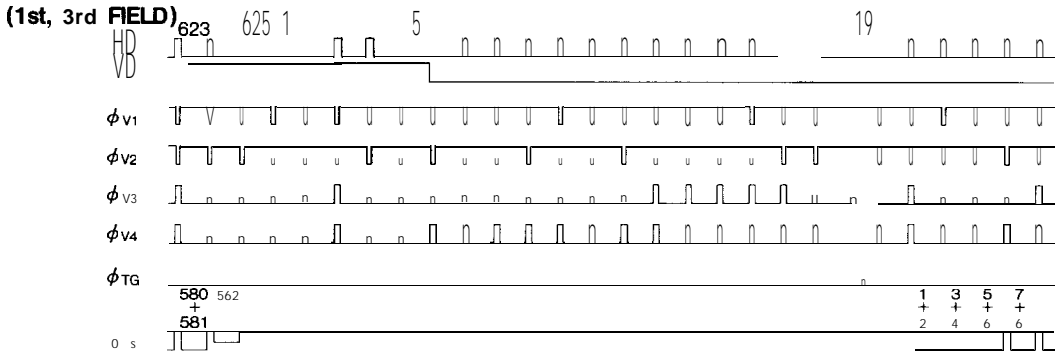
2

COLOR FILTER ARRAY

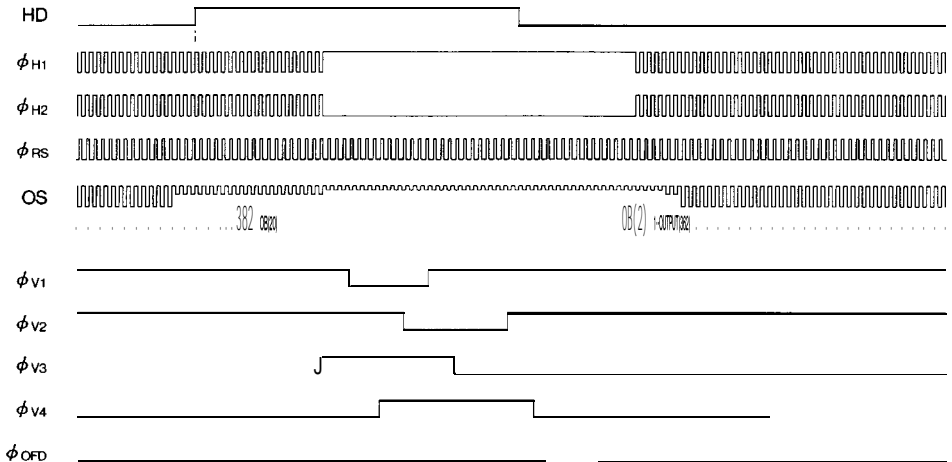


TIMING DIAGRAM EXAMPLE

VERTICAL TRANSFER TIMING

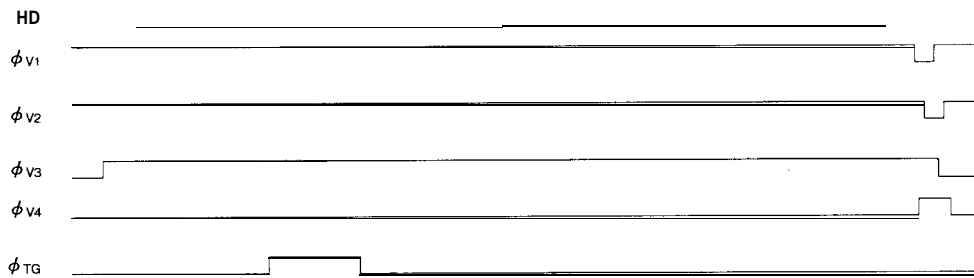


HORIZONTAL TRANSFER TIMING

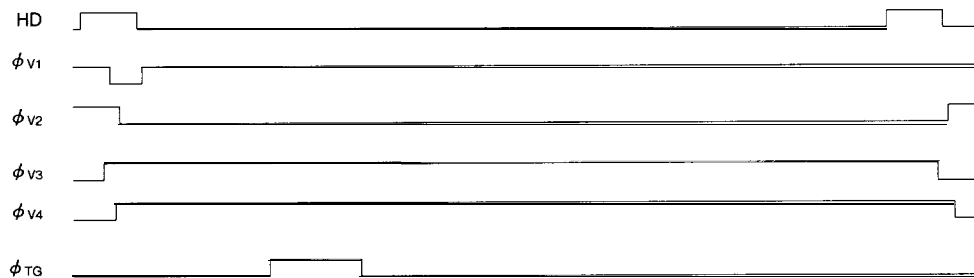


READOUT TIMING

(1st, 3rd FIELD)



(2nd, 4th FIELD)



CCD AREA SENSORS
2

SYSTEM CONFIGURATION EXAMPLE

